

## Connect »

**Danna Sossen**  
(281) 207-3709  
dsossen@icotexas.com

**Tawya Dornak**  
(281) 207-3702  
tdornak@icotexas.com

## Retail

### 7909 W Grand Parkway S Richmond, TX 77407

1,919 SF retail space on W Grand Parkway S near W Bellfort



## Overview

- 1,919 SF Second Generation Space
- Monument Signage Available
- Located near Aldi, Kroger, Gallery Furniture & Regal Cinemas
- Surrounded by Master-Planned Communities
- Co-tenants: Wendy's, Today's Vision, Little Caesars, etc.
- Grand Parkway Accessibility & Exposure to 43,000 cpd
- Westpark Tollway 3.5 miles
- Income \$144,208 within 1 mile
- Lease Rate: \$28.00 pSF



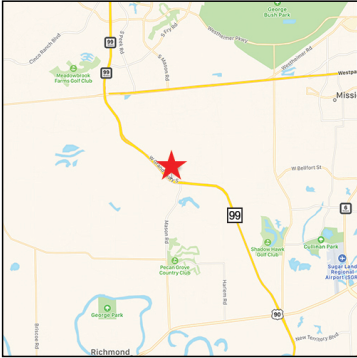
ICOTEXAS.COM • 281.240.9090

2333 Town Center Drive, Suite 300, Sugar Land, TX 77478

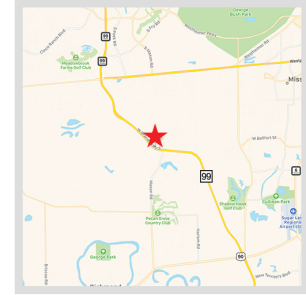
Information contained herein has been obtained from the owner of the property or from other resources that we believe reliable. We have no reason to doubt the accuracy of such information, however, no warranty or guarantee, either expressed or implied, is made with respect to the accuracy thereof. All such information is submitted subject to errors, omissions or changes in conditions prior to sale, lease or withdrawal without notice. All information contained herein should be verified to satisfaction of the person relying thereon.

## Retail

7909 W Grand Parkway S Richmond, TX 77407



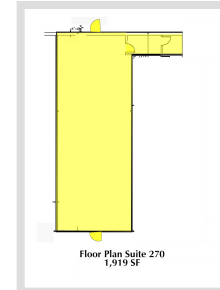
Main Image



Map



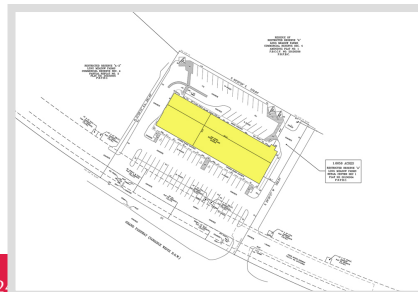
Tenant Aerial



Floor Plan



Monument Sign



Connect »

**Danna Sossen**  
(281) 207-3709  
dsossen@icotexas.com

**Tawya Dornak**  
(281) 207-3702  
tdornak@icotexas.com



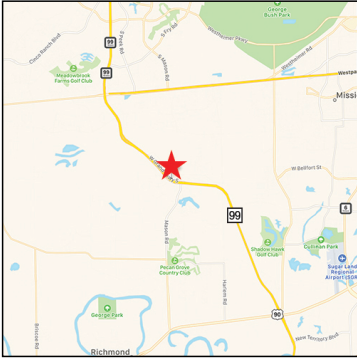
ICOTEXAS.COM • 281.2

2333 Town Center Drive, Suite 300, Sugar Land, TX 77478

Survey

Information contained herein has been obtained from the owner of the property or from other resources that we believe reliable. We have no reason to doubt the accuracy of such information, however, no warranty or guarantee, either expressed or implied, is made with respect to the accuracy thereof. All such information is submitted subject to errors, omissions or changes in conditions prior to sale, lease or withdrawal without notice. All information contained herein should be verified to satisfaction of the person relying thereon.





## Connect »

**Danna Sossen**  
(281) 207-3709  
dsossen@icotexas.com

**Tawya Dornak**  
(281) 207-3702  
tdornak@icotexas.com

## Retail

7909 W Grand Parkway S Richmond, TX 77407

## Tenant Aerial



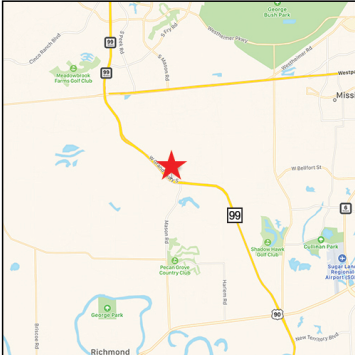
ICOTEXAS.COM • 281.240.9090  
2333 Town Center Drive, Suite 300, Sugar Land, TX 77478

Information contained herein has been obtained from the owner of the property or from other resources that we believe reliable. We have no reason to doubt the accuracy of such information, however, no warranty or guarantee, either expressed or implied, is made with respect to the accuracy thereof. All such information is submitted subject to errors, omissions or changes in conditions prior to sale, lease or withdrawal without notice. All information contained herein should be verified to satisfaction of the person relying thereon.

## Retail

7909 W Grand Parkway S Richmond, TX 77407

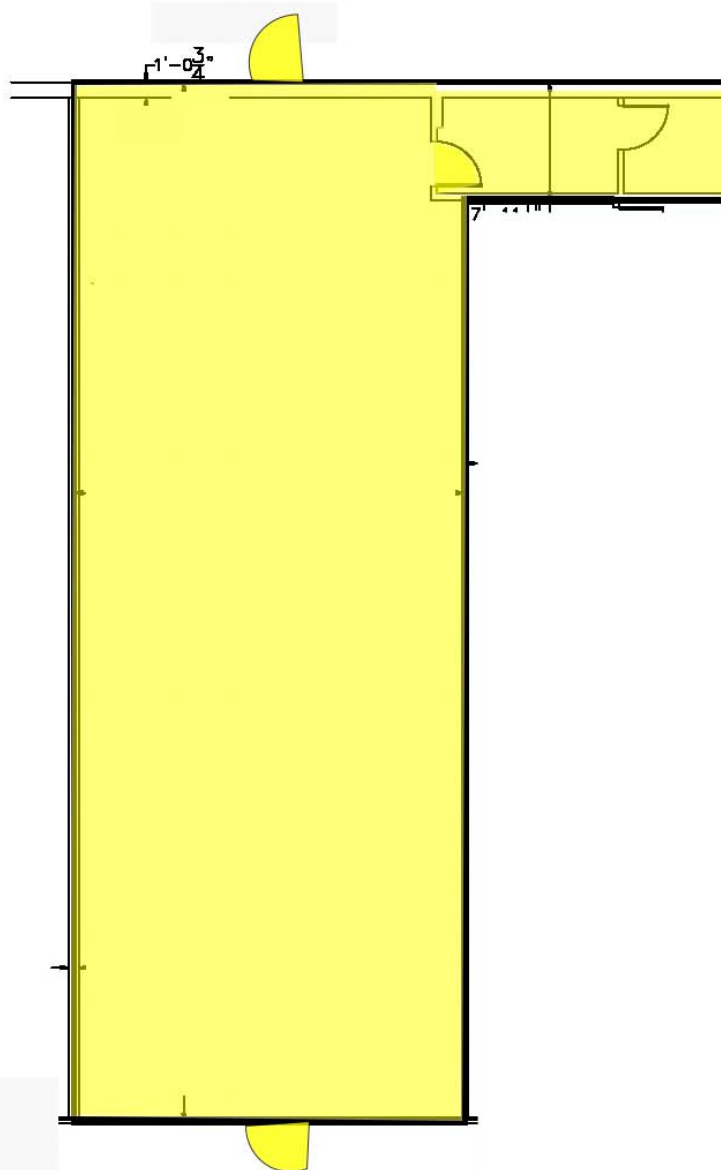
## Floor Plan



### Connect »

**Danna Sossen**  
(281) 207-3709  
dsossen@icotexas.com

**Tawya Dornak**  
(281) 207-3702  
tdornak@icotexas.com



**Floor Plan Suite 270**  
**1,919 SF**



ICOTEXAS.COM •  
2333 Town Center Drive, Suite 200

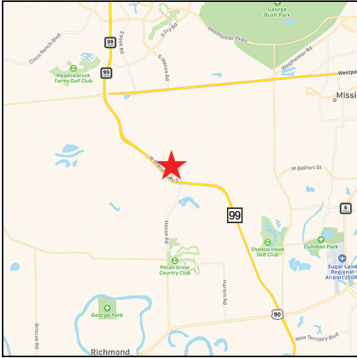
Information contained herein has been obtained from a source that is not a warranty or guarantee, either expressed or implied, is not a contract, and is subject to withdrawal without notice. All information contained herein is for informational purposes only.



## Retail

7909 W Grand Parkway S Richmond, TX 77407

## Monument Sign



### Connect »

**Danna Sossen**  
(281) 207-3709  
dsossen@icotexas.com

**Tawya Dornak**  
(281) 207-3702  
tdornak@icotexas.com

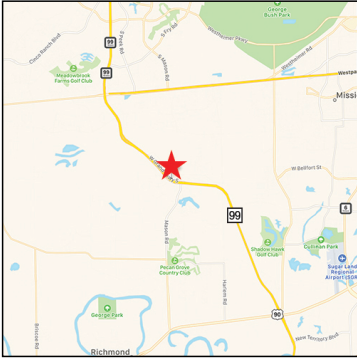


ICOTEXAS.COM • 281.240.9090

2333 Town Center Drive, Suite 300, Sugar Land, TX 77478

Information contained herein has been obtained from the owner of the property or from other resources that we believe reliable. We have no reason to doubt the accuracy of such information, however, no warranty or guarantee, either expressed or implied, is made with respect to the accuracy thereof. All such information is submitted subject to errors, omissions or changes in conditions prior to sale, lease or withdrawal without notice. All information contained herein should be verified to satisfaction of the person relying thereon.





## Connect »

**Danna Sossen**  
(281) 207-3709  
dsossen@icotexas.com

**Tawya Dornak**  
(281) 207-3702  
tdornak@icotexas.com

## Retail

7909 W Grand Parkway S Richmond, TX 77407



ICOTEXAS.COM • 281.240.9090

2333 Town Center Drive, Suite 300, Sugar Land, TX 77478

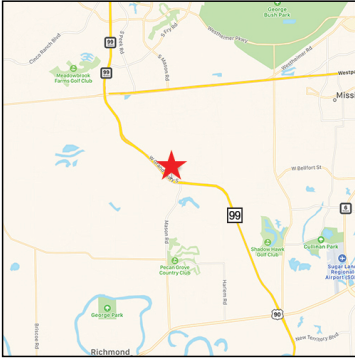
Information contained herein has been obtained from the owner of the property or from other resources that we believe reliable. We have no reason to doubt the accuracy of such information, however, no warranty or guarantee, either expressed or implied, is made with respect to the accuracy thereof. All such information is submitted subject to errors, omissions or changes in conditions prior to sale, lease or withdrawal without notice. All information contained herein should be verified to satisfaction of the person relying thereon.



## Retail

7909 W Grand Parkway S Richmond, TX 77407

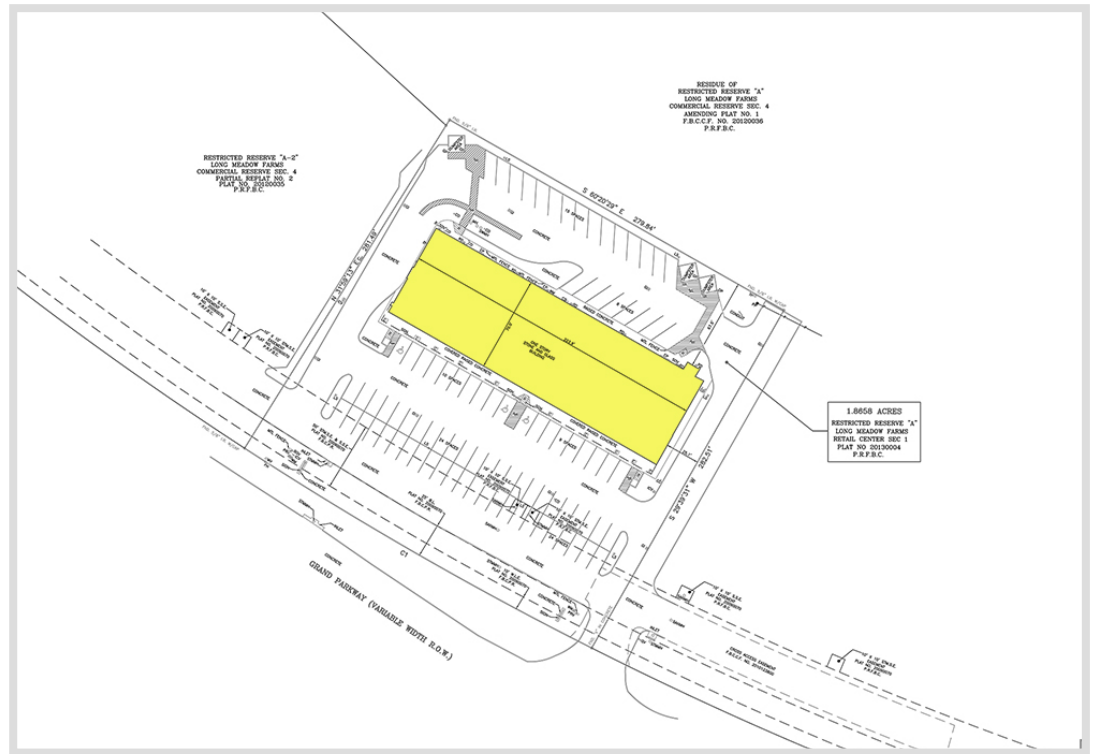
## Survey



### Connect »

**Danna Sossen**  
(281) 207-3709  
dsossen@icotexas.com

**Tawya Dornak**  
(281) 207-3702  
tdornak@icotexas.com

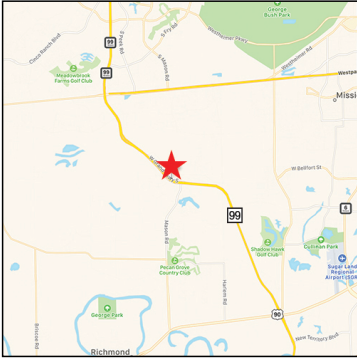


ICOTEXAS.COM • 281.240.9090

2333 Town Center Drive, Suite 300, Sugar Land, TX 77478

Information contained herein has been obtained from the owner of the property or from other resources that we believe reliable. We have no reason to doubt the accuracy of such information, however, no warranty or guarantee, either expressed or implied, is made with respect to the accuracy thereof. All such information is submitted subject to errors, omissions or changes in conditions prior to sale, lease or withdrawal without notice. All information contained herein should be verified to satisfaction of the person relying thereon.





## Connect »

**Danna Sossen**  
(281) 207-3709  
dsossen@icotexas.com

**Tawya Dornak**  
(281) 207-3702  
tdornak@icotexas.com

## Retail

**7909 W Grand Parkway S Richmond, TX 77407**

### INFORMATION ABOUT BROKERAGE SERVICES

Before working with a real estate broker, you should know that the duties of a broker depend on whom the broker represents. If you are a prospective seller or landlord (owner) or a prospective buyer or tenant (buyer), you should know that the broker who lists the property for sale or lease is the owner's agent. A broker who acts as a subagent represents the owner in cooperation with the listing broker. A broker who acts as a buyer's agent represents the buyer. A broker may act as an intermediary between the parties if the parties consent in writing. A broker can assist you in locating a property, preparing a contract or lease, or obtaining financing without representing you. A broker is obligated by law to treat you honestly.

#### If The Broker Represents The Owner:

The broker becomes the owner's agent by entering into an agreement with the owner, usually through a written listing agreement, or by agreeing to act as a subagent by accepting an offer of subagency from the listing broker. A subagent may work in a different real estate office. A listing broker or subagent can assist the buyer but does not represent the buyer and must place the interests of the owner first. The buyer should not tell the owner's agent anything the buyer would not want the owner to know because an owner's agent must disclose to the owner any material information known to the agent.

#### If The Broker Represents The Buyer:

The broker becomes the buyer's agent by entering into an agreement to represent the buyer, usually through a written buyer representation agreement. A buyer's agent can assist the owner but does not represent the owner and must place the interests of the buyer first. The owner should not tell a buyer's agent anything the owner would not want the buyer to know because the buyer's agent must disclose the buyer any material information known to the agent.

#### If The Broker Acts As An Intermediary:

A broker may act as an intermediary between the parties if the broker complies with The Texas Real Estate License Act. The broker must obtain the written consent of each party to the transaction to act as an intermediary. The written consent must state who will pay the broker and, in conspicuous bold or underlined print, set forth the broker's obligations as an intermediary. The broker is required to treat each party honestly and fairly and to comply with The Texas Real Estate License Act. A broker who acts as an intermediary in a transaction:

1. shall treat all parties honestly;
2. may not disclose that the owner will accept a price less than the asking price unless authorized in writing to do so by the owner;
3. may not disclose that the buyer will pay a price greater than the price submitted in a written offer unless authorized to do so by the buyer; and
4. may not disclose any confidential information or any information that a party specifically instructs the broker in writing not to disclose unless authorized in writing to disclose the information or required to do so by The Texas Real Estate License Act or a court order or if the information materially relates to the condition of the property.

With the parties' consent, a broker acting as an intermediary between the parties may appoint a person who is licensed under The Texas Real Estate License Act and associated with the broker to communicate with and carry out instructions of one party and another person who is licensed under that Act and associated with the broker to communicate with and carry out instruction of the other party.

If you choose to have a broker represent you, you should enter into a written agreement with the broker that clearly establishes the broker's obligations and your obligations. The agreement should state how and by whom the broker will be paid. You have the right to choose the type of representation, if any, you wish to receive. Your payment of a fee to a broker does not necessarily establish that the broker represents you. If you have any questions regarding the duties and responsibilities of the broker, you should resolve those questions before proceeding.

**Texas law requires all real estate licensees to give the following information about brokerage services to prospective buyers, tenants, sellers, and landlords.**

**Sign below to acknowledge receipt of this information about brokerage services for the licensee's records.**

\_\_\_\_\_  
Buyer or Tenant

\_\_\_\_\_  
Date

\_\_\_\_\_  
Seller or Landlord

\_\_\_\_\_  
Date



ICOTEXAS.COM • 281.240.9090

2333 Town Center Drive, Suite 300, Sugar Land, TX 77478

Information contained herein has been obtained from the owner of the property or from other resources that we believe reliable. We have no reason to doubt the accuracy of such information, however, no warranty or guarantee, either expressed or implied, is made with respect to the accuracy thereof. All such information is submitted subject to errors, omissions or changes in conditions prior to sale, lease or withdrawal without notice. All information contained herein should be verified to satisfaction of the person relying thereon.



```

Array
(
    [proptype] => retail
    [propid] => 1084
    [title] =>
    [shortdesc] => 1,919 SF retail space on W Grand Parkway S near W Bellfort
    [fulladdress] => 7909 W Grand Parkway S
    Richmond, TX 77407
    [contactname_1] => Danna Sossen
    [contactphone_1] => (281) 207-3709
    [contactemail_1] => dsossen@icotexas.com
    [contactname_2] => Tawya Dornak
    [contactphone_2] => (281) 207-3702
    [contactemail_2] => tdornak@icotexas.com
    [mappicture_source] => /data/www/indermuehle/attach/1084_r_img2.jpg
    [propinfo] => - 1,919 SF Second Generation Space
    - Monument Signage Available
    - Located near Aldi, Kroger, Gallery Furniture & Regal Cinemas
    - Surrounded by Master-Planned Communities
    - Co-tenants: Wendy's, Today's Vision, Little Caesars, etc.
    - Grand Parkway Accessibility & Exposure to 43,000 cpd
    - Westpark Tollway 3.5 miles
    - Income $144,208 within 1 mile
    - Lease Rate: $28.00 pSF
    [all_photos] => Array
        (
            [0] => Array
                (
                    [filename] => /data/www/indermuehle/attach/1084_r_img1.jpg
                    [title] => Main Image
                )
            [1] => Array
                (
                    [filename] => /data/www/indermuehle/attach/1084_r_img2.jpg
                    [title] => Map
                )
            [2] => Array
                (
                    [filename] => /data/www/indermuehle/attach/1084_r_img3.jpg
                    [title] => Tenant Aerial
                )
            [3] => Array
                (
                    [filename] => /data/www/indermuehle/attach/1084_r_img4.jpg
                    [title] => Floor Plan
                )
            [4] => Array
                (
                    [filename] => /data/www/indermuehle/attach/1084_r_img5.jpg
                    [title] => Monument Sign
                )
            [5] => Array
                (
                    [filename] => /data/www/indermuehle/attach/1084_r_img6.jpg
                    [title] =>
                )
            [6] => Array
                (
                    [filename] => /data/www/indermuehle/attach/1084_r_img8.jpg
                    [title] => Survey
                )
        )

    [mainpicture_source] => /data/www/indermuehle/attach/1084_r_img1.jpg
    [photos] => Array
        (
            [0] => Array
                (
                    [filename] => /data/www/indermuehle/attach/1084_r_img3.jpg
                    [title] => Tenant Aerial
                )
            [1] => Array
                (
                    [filename] => /data/www/indermuehle/attach/1084_r_img4.jpg
                    [title] => Floor Plan
                )
            [2] => Array
                (
                    [filename] => /data/www/indermuehle/attach/1084_r_img5.jpg
                    [title] => Monument Sign
                )
            [3] => Array
                (
                    [filename] => /data/www/indermuehle/attach/1084_r_img6.jpg
                    [title] =>
                )
            [4] => Array
                (
                    [filename] => /data/www/indermuehle/attach/1084_r_img8.jpg
                    [title] => Survey
                )
        )
)
)

```